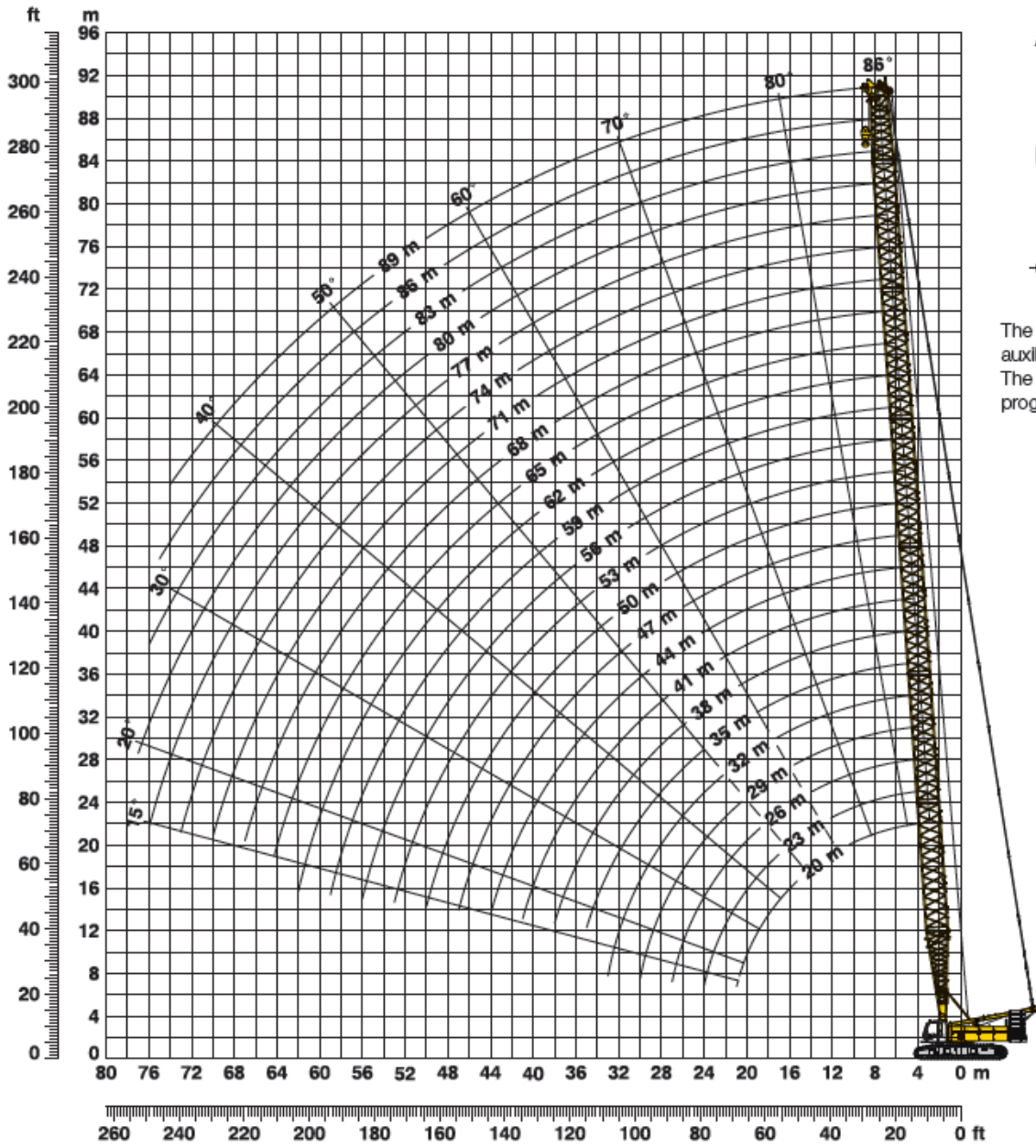


Dimensions in meters, weights and capacities in metric tonnes. For reference only.



Auxiliary jib 24 t



The maximum capacity of the auxiliary jib is 24 t. The corresponding load chart is programmed in the LMI system.

Dimensions in meters, weights and capacities in metric tonnes. For reference only.



20-89m
S



82,3t



5,8m



360°

DIN

75%

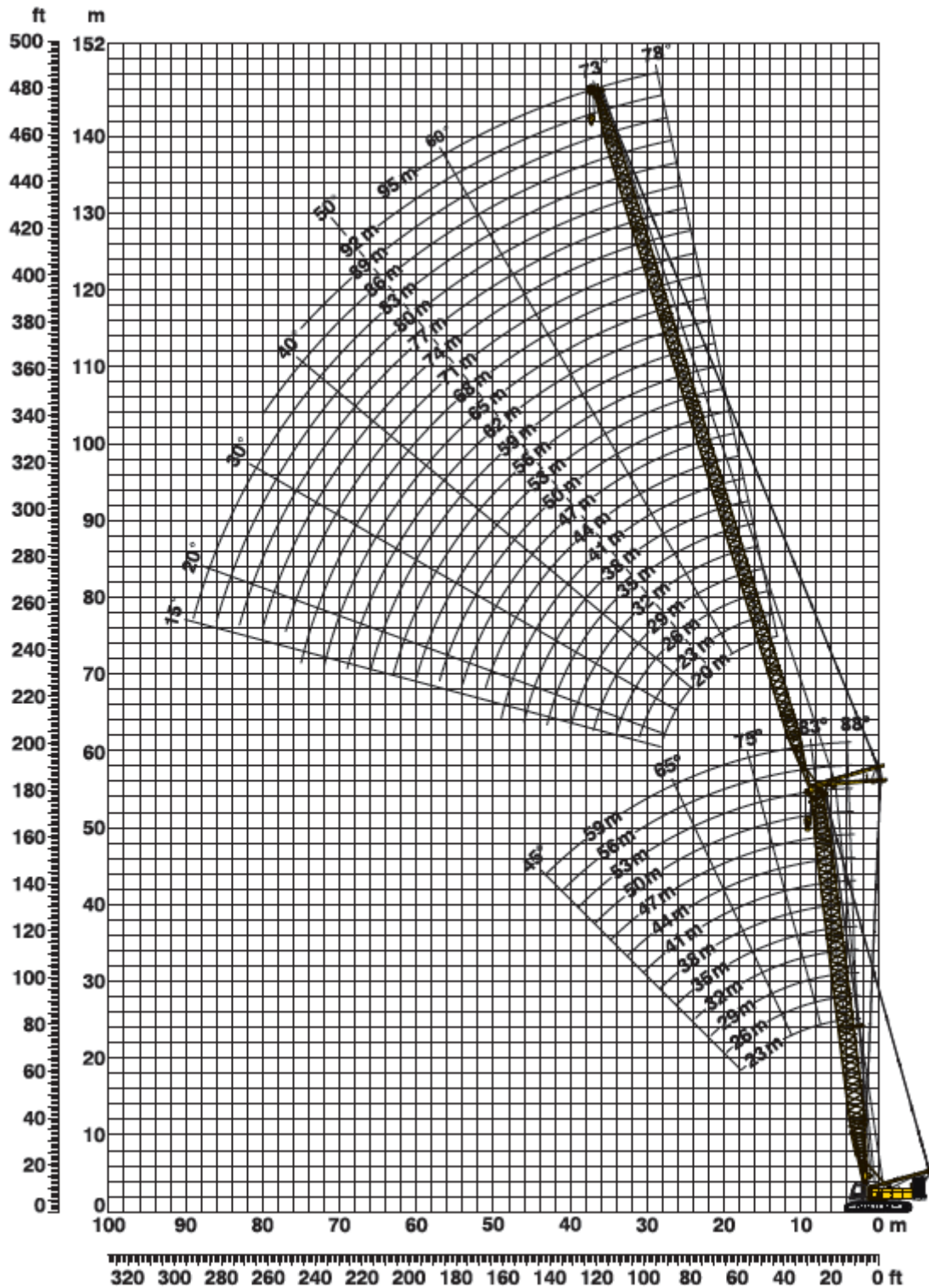
m	20	26	32	38	44	50	56	62	68	74	80	86	89	m
6					114,8									6
7				129,5	107,8	90,1	80,3	65,4						7
8		140,8	132,2	118,8	100,9	83,7	77,6	64,9	52,1	45				8
9	128,6	122,5	115,7	109,5	93,2	78,8	74,8	62,1	50,3	44,7	37	30,2	26,6	9
10	113,8	108,2	102,8	97,7	87,2	73,6	71,9	60,2	48,3	43,1	36	30	26,6	10
12	87,2	87,2	83,7	80	76,7	66,3	66,8	55,6	44,6	40,7	34	28,2	25,2	12
14	70,2	70,3	70,3	67,5	65	59,2	60,2	52,3	41,4	38,1	31,7	26,6	24	14
16	58,5	58,5	58,5	58,2	56,1	53,7	52,2	48,5	38,8	36,2	29,9	25	22,5	16
18	49,9	49,9	49,9	49,7	49,2	47,5	45,9	44,3	36	34,3	28,5	23,7	21,3	18
26		30,3	30,4	30,2	30	42,2	40,8	39,4	33,7	32,6	27	22,6	20,4	26
32			22,7	22,6	22,4	22	21,8	21,4	21,1	20,6	19,8	17,6	16,1	32
38				17,5	17,3	17	16,8	16,4	16,1	15,7	15,3	14,5	14,1	38
44					13,7	13,5	13,2	12,8	12,5	12,1	11,8	11,3	11	44
50						10,8	10,6	10,2	9,9	9,5	9,2	8,8	8,6	50
55							8,8	8,5	8,2	7,8	7,4	7	6,9	55
60								7	6,7	6,3	6	5,6	5,4	60
65									5,4	5,1	4,7	4,3	4,2	65
70										4	3,7	3,3	3,2	70
75											2,8	2,4	2,3	75

Dimensions in meters, weights and capacities in metric tonnes. For reference only.

220 t**LRI200****CraneNorway**
GROUP**20-89m**
S**72,3t****5,8m****360°****75%**

m	20	26	32	38	44	50	56	62	68	74	80	86	89	m
4,1	220													
5	217	162,8	153,6											
6	185,8	159	150,7	140,3	114,8									6
7	162,1	152,1	141,4	129,5	107,8	90,1	80,3	65,4						7
8	138,5	129,4	121,4	114,2	100,9	83,7	77,6	64,9	52,1	45				8
9	119,4	112,4	106,2	100,5	93,2	78,8	74,8	62,1	50,3	44,7	37	30,2	26,6	9
10	104,4	99,2	94,2	89,5	85,3	73,6	71,9	60,2	48,3	43,1	36	30	26,6	10
12	79,9	79,9	76,7	73,3	70,2	66,3	64,5	55,6	44,6	40,7	34	28,2	25,2	12
14	64,3	64,3	64,3	61,7	59,4	57	54,9	52,3	41,4	38,1	31,7	26,6	24	14
16	53,4	53,5	53,4	53,1	51,2	49,3	47,5	45,8	38,8	36,2	29,9	25	22,5	16
18	45,5	45,5	45,5	45,3	44,9	43,2	41,7	40,2	36	34,3	28,5	23,7	21,3	18
20	39,3	39,5	39,4	39,2	39	38,3	37	35,7	33,7	32,6	27	22,6	20,4	20
26		27,4	27,5	27,3	27,1	26,8	26,5	26,1	25,1	24,2	23,2	19,9	17,7	26
32			20,4	20,3	20,1	19,8	19,5	19,1	18,8	18,3	17,5	16,5	16,1	32
38				15,6	15,5	15,2	14,9	14,5	14,2	13,8	13,3	12,5	12,1	38
44					12,1	11,9	11,7	11,3	11	10,6	10,3	9,6	9,3	44
50						9,4	9,2	8,8	8,5	8,1	7,8	7,4	7,1	50
55							7,5	7,2	6,9	6,5	6,2	5,8	5,6	55
60								5,8	5,5	5,2	4,8	4,4	4,3	60
65									4,4	4	3,7	3,3	3,1	65
70										3	2,7	2,3	2,2	70

Dimensions in meters, weights and capacities in metric tonnes. For reference only.



Dimensions in meters, weights and capacities in metric tonnes. For reference only.

220 t**LRI200****CraneNorway**
GROUP**23m****SW 88°/83°****20-95m****82,3****5,8****360°****75%**

m	23													m
	20	26	32	38	44	50	56	62	68	74	80	86	95	
8	*69.9													8
9	*69.9	*57.4												9
10	*57.2	*54.4	*47.7											10
12	56.8	*45.6	*43.1	*40.2										12
14	47.1	45.7	*37.1	*37.4	*32.6									14
16	40.5	39.1	37.4	*30.6	*28.9	*26.4	*23.2							16
18	35.4	34.4	32.7	31.1	*25.7	*23.9	*21.6	*18.2	*14.4					18
20	31.2	30.1	28.9	27.6	26.2	*21.5	*19.9	*17.2	*14.1	*11.6				20
24	25.5	24.6	23.4	22.4	21.4	20	18.8	15.9	*13.2	*11.1	*9.1	*7.4	*5.2	24
28		21	20	19	18.3	17.1	16.3	14.6	12.9	10.9	*8.8	*7.2	*5.1	28
32			17.5	16.6	16	15	14.4	12.9	12	10.4	8.7	7.2	*5	32
38				13.9	13.5	12.7	12	10.9	10.4	9.3	8.1	6.7	4.8	38
42				12.5	12	11.3	10.8	9.8	9.2	8.6	7.7	6.4	4.6	42
48					9.4	9.8	9.2	8.4	8	7.4	6.8	5.9	4.2	48
55							7.9	7.1	6.7	6.3	5.8	5	3.8	55
65								5.7	5.4	4.9	4.4	3.9	3.1	65
70									4.8	4.4	3.9	3.4	2.7	70
75										3.9	3.5	3		75
80											3.1	2.6		80
85												2.2		85

Dimensions in meters, weights and capacities in metric tonnes. For reference only.

*Main boom at 88°



29m



20-95m



82,3



5,8



360°



75%

SW 88°/83°

m	29													m	
	20	26	32	38	44	50	56	62	68	74	80	86	95		
9	*65														9
10	*59.3	*55.9													10
12	*50.3	*47.4	*44.1	*39.5											12
14	51.7	*41.4	*38.6	*35.8	*31.9										14
16	44.5	42.4	39.1	*31.8	*29.6	*25.8									16
18	38.8	37.2	35.2	32.8	*26.6	*24.3	*21.4	*16.8							18
20	34.6	33.1	31.3	29.5	27.6	*22.1	*20.8	*16.3	*13.3	*10.9					20
24	28.5	27.2	25.8	24.3	23	21.2	19.1	*15	*12.6	*10.5	*8.7	*6.9	*4.8		24
28		23.3	22.2	20.9	20	18.5	17.4	14.7	12.4	*10.2	*8.4	*6.8	*4.8		28
32			19.5	18.5	17.6	16.5	15.6	13.7	11.9	10.1	8.4	6.8	*4.7		32
38				15.7	15	14.1	13.3	12.1	11.1	9.5	7.8	6.5	4.6		38
42				14.3	13.5	12.7	12.2	10.9	10.2	9.2	7.5	6.2	4.5		42
48					11.9	11.2	10.5	9.6	9	8.1	7	5.9	4.1		48
55							9.2	8.3	7.7	7.2	6.5	5.5	3.7		55
65								6.9	6.4	5.8	5.2	4.7	3.2		65
70									5.8	5.3	4.7	4.1	2.8		70
75										4.8	4.3	3.7	2.5		75
80											3.9	3.3			80
85												3			85

Dimensions in meters, weights and capacities in metric tonnes. For reference only.

*Main boom at 88°

220 t**LRI200****CraneNorway**
GROUP**35m****SW 88°/83°****20-95m****82,3****5,8****360°****75%**

m	35													m
	20	26	32	38	44	50	56	62	68	74	80	86	95	
9	*63.1													9
10	*58.3	*53.7												10
12	*50.2	*46.8	*42.7											12
14	52.7	*41.3	*38	*34.6	*29.6									14
16	45.7	43.2	*34.2	*31.2	*27.9	*24.1	*19.4							16
18	40.3	38.2	35.8	*28.6	*25.7	*23.1	*19.1	*15.5						18
20	36.2	34.4	32.2	29.9	*23.9	*21.4	*18.6	*15.1	*12.4	*10.2				20
24	29.8	28.4	26.8	24.9	23.1	21.1	17.6	*14.2	*11.9	*9.8	*8.1	*6.4	*4.4	24
28		24.5	23.2	21.7	20.2	18.8	16.9	14.1	11.8	*9.7	*7.9	*6.4	*4.4	28
32		21.8	20.5	19.4	18	17.1	15.3	13.4	11.5	9.6	8	*6.4	*4.4	32
38			12.1	16.6	15.5	14.8	13.3	12.4	10.8	9.2	7.6	6.3	4.3	38
42				15.2	14.1	13.5	12.3	11.3	10.2	8.9	7.3	6	4.3	42
48					12.5	11.9	10.8	10.1	9.3	8.2	6.9	5.7	4	48
55						10.5	9.5	8.8	8.2	7.5	6.5	5.3	3.6	55
60							8.7	8.1	7.4	6.8	6	5.1	3.3	60
65								7.4	6.8	6.2	5.5	4.7	3.1	65
70									6.2	5.7	5	4.3	2.8	70
75										5.2	4.6	3.9	2.5	75
80											4.2	3.6		80
85												3.3		85
90												2.7		90

Dimensions in meters, weights and capacities in metric tonnes. For reference only.

*Main boom at 88°



41m



20-95m



82,3



5,8



360°



75%

SW 88°/83°

m	41													m
	20	26	32	38	44	50	56	62	68	74	80	86	95	
9	*55													9
10	*52.2	*46.1												10
12	*46.8	*41.9	*37.2											12
14	45.5	*38.3	*34.1	*30.5	*26.5									14
16	41.6	37.8	*31.5	*28.2	*24.9	*21.8								16
18	38	34.7	31.5	*26.4	*23.2	*20.8	*17.4	*14						18
20	34.8	32	29.1	26.5	*21.9	*19.5	*16.9	*13.8	*11.4	*9.3				20
24	29.5	27.3	25.2	23.2	20.6	18.8	*15.1	*13.1	11	*9	*7.4	*5.9		24
28		25.7	22.7	21	19	17.4	15.1	13.1	10.8	*9	*7.3	*5.9	*4	28
32		24.3	20.3	19.4	17.5	16.4	14.2	12.7	10.8	8.9	7.3	*5.9	*4	32
38			17.8	16.7	15.5	14.7	12.9	11.8	10.3	8.8	7.3	5.9	4	38
42				15.4	14.2	13.6	12.2	11	9.9	8.6	7	5.7	4	42
48					12.5	12	10.8	10.1	9.1	8	6.7	5.5	3.8	48
55						10.6	9.6	8.8	8.1	7.4	6.3	5.1	3.5	55
60							8.8	8.1	7.4	6.7	5.9	4.9	3.2	60
65								7.4	6.8	6.1	5.4	4.6	3	65
70									6.2	5.6	5	4.2	2.7	70
75										5.1	4.6	3.9	2.4	75
80											4.1	3.6		80
85												3.4	3.1	85
90													2.7	90

Dimensions in meters, weights and capacities in metric tonnes. For reference only.

*Main boom at 88°

220 t**LRI200****CraneNorway**
GROUP**47m****20-95m****82,3****5,8****360°****DIN****75%****SW 88°/83°**

m	47													m
	20	26	32	38	44	50	56	62	68	74	80	86	95	
9	*45.9													9
10	*43.6	*38.2												10
12	*39.2	*35.3	*31.7											12
14	*35.7	*32.2	*28.9	*25.8	*22.6									14
16	35.1	*29.2	*26.8	*23.8	*21.3	*18.7								16
18	32.1	29.2	*24.5	*22.2	*19.9	*17.5	*15.4	*12.7						18
20	29.2	26.8	24.7	21.9	*18.7	*16.3	*14.5	*12.5	*10.3	*8.5				20
24	25.2	23	21.4	19.4	17.7	15.4	*12.9	*11.5	*10	*8.2	*6.7	*5.3		24
28		20.8	19.3	17.5	16.1	14.2	12.8	11.5	*9.5	*8.1	*6.7	*5.3	*3.6	28
32		19.3	17.8	16.2	15	13.3	12	10.8	9.6	8.1	*6.7	*5.3	*3.6	32
38			16	14.5	13.5	12	10.9	9.9	8.8	7.7	6.6	5.3	3.5	38
42				13.6	12.6	11.3	10.3	9.3	8.3	7.3	6.3	5.2	3.5	42
48					11.5	10.3	9.4	8.5	7.5	6.7	5.8	4.9	3.4	48
55						9.3	8.5	7.6	6.8	6.1	5.2	4.4	3.2	55
60							7.9	7.1	6.3	5.6	4.9	4.1	2.9	60
65								6.7	5.9	5.2	4.5	3.7	2.6	65
70									5.5	4.8	4.1	3.4	2.4	70
75										4.5	3.8	3.1		75
80										3.8	3.5	2.8		80
85											3.2	2.6		85
90												2.3		90

Dimensions in meters, weights and capacities in metric tonnes. For reference only.

*Main boom at 88°



53m



20-95m



82,3



5,8



360°



75%

SW 88°/83°

m	53													m
	20	26	32	38	44	50	56	62	68	74	80	86	95	
9	*38.7													9
10	*37.2													10
12	*33.8	*30.6	*27.2											12
14	*30.7	*28	*24.9	*22.3	*19									14
16	31.3	*25.6	*23	*20.8	*18.2	*16.1								16
18	28.6	26.2	*21.1	*19.4	*17	*15.1	*13.4	*11.4						18
20	26.3	24.2	21.7	*18	*15.9	*14.2	*12.7	*11.1	*9.3					20
24	22.8	21	18.8	17.4	15.2	*12.7	*11.3	*10.1	*8.9	*7.4	*6	*4.8		24
28	20.8	19	17.1	15.9	13.9	12.6	11.3	10	*8.3	*7.1	*5.9	*4.7	*3.1	28
32		17.8	15.9	14.7	12.9	11.8	10.6	9.5	8.5	7.2	*5.7	*4.6	*3.1	32
38			14.5	13.3	11.7	10.7	9.7	8.7	7.7	6.8	5.8	4.6	3	38
42				12.6	11	10.1	9.1	8.2	7.3	6.3	5.4	4.6	3	42
48					10.1	9.2	8.3	7.5	6.6	5.8	5	4.1	2.8	48
55						8.4	7.6	6.7	5.9	5.2	4.4	3.6	2.5	55
60							7.1	6.3	5.5	4.8	4.1	3.3		60
65								5.9	5.1	4.4	3.7	3.1		65
70									4.8	4.1	3.4	2.8		70
75										4	3.8	3.2	2.5	75
80											3.5	2.9	2.3	80
85												2.6		85
90														90

Dimensions in meters, weights and capacities in metric tonnes. For reference only.

*Main boom at 88°

220 t**LRI200****CraneNorway**
GROUP**59m****SW 88°/83°****20-95m****82,3****5,8****360°****75%**

m	59								m
	20	26	32	38	44	50	56	62	
9									9
10	*32								10
12	*29.7	*26.1	*23.2						12
14	*27.1	*24.3	*21.6	*19.2					14
16	27.4	*22.3	*20.3	*17.8	*15.9	*14.1			16
18	25.6	22.8	*18.8	*16.7	*15	*13.3	*11.9	*10.1	18
20	23.7	21.4	19.3	*15.5	*14	*12.5	*11.2	*9.9	20
24	20.7	18.5	16.9	14.9	13.5	*11.3	*10	*8.9	24
28	18.9	16.9	15.5	13.7	12.5	11.3	10.1	*8.2	28
32		15.8	14.4	12.7	11.6	10.5	9.5	8.5	32
38			13.2	11.5	10.5	9.6	8.7	7.7	38
42				10.9	9.9	9	8.1	7.2	42
48					9.1	8.2	7.4	6.6	48
55						7.5	6.7	5.9	55
60							6.3	5.5	60
65								4.3	65

Dimensions in meters, weights and capacities in metric tonnes. For reference only.

*Main boom at 88°