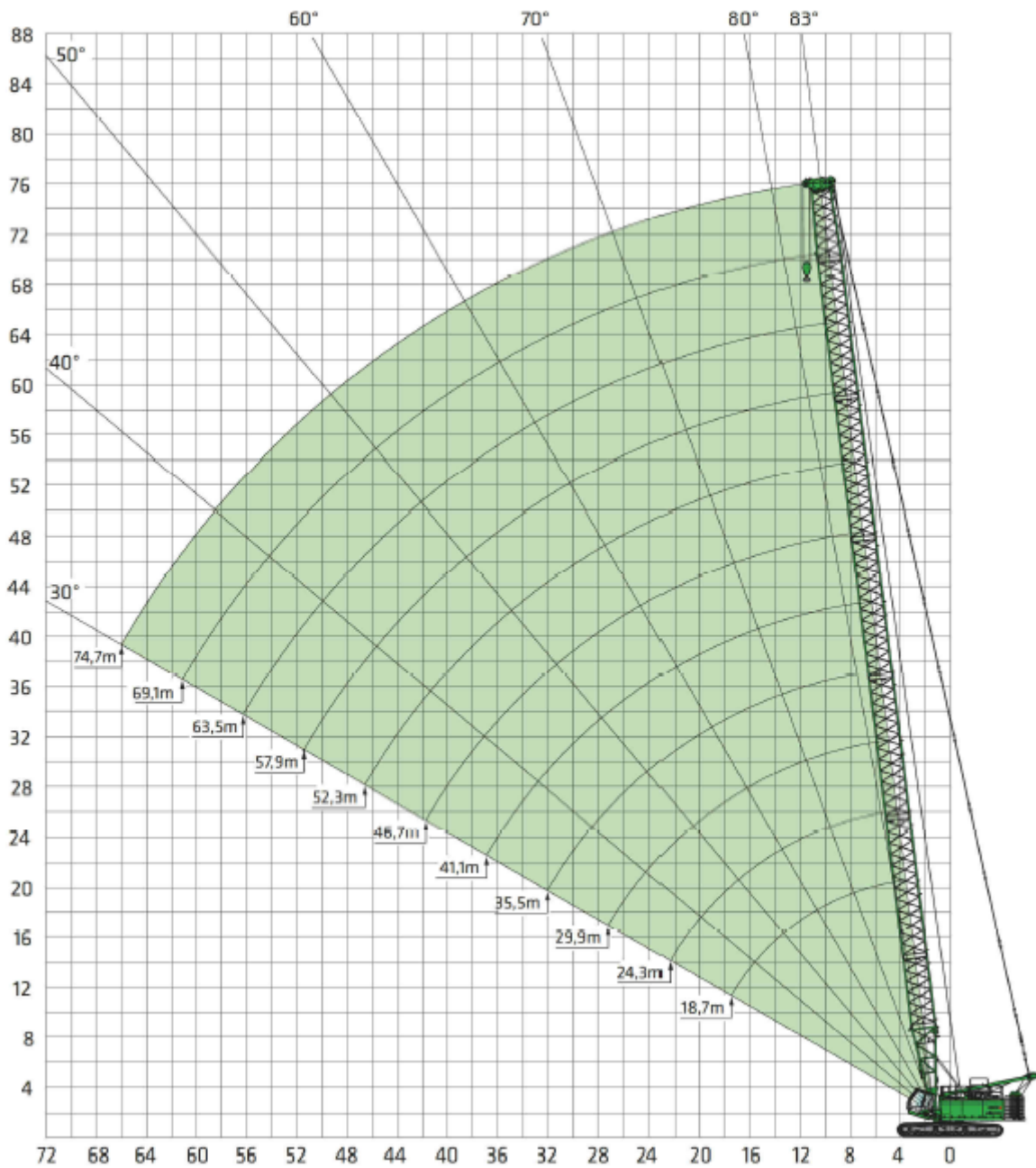


Dimensions in meters, weights and capacities in metric tonnes. For reference only.



Dimensions in meters, weights and capacities in metric tonnes. For reference only.



13.1-74.7m
SH



60.0t



6.8m



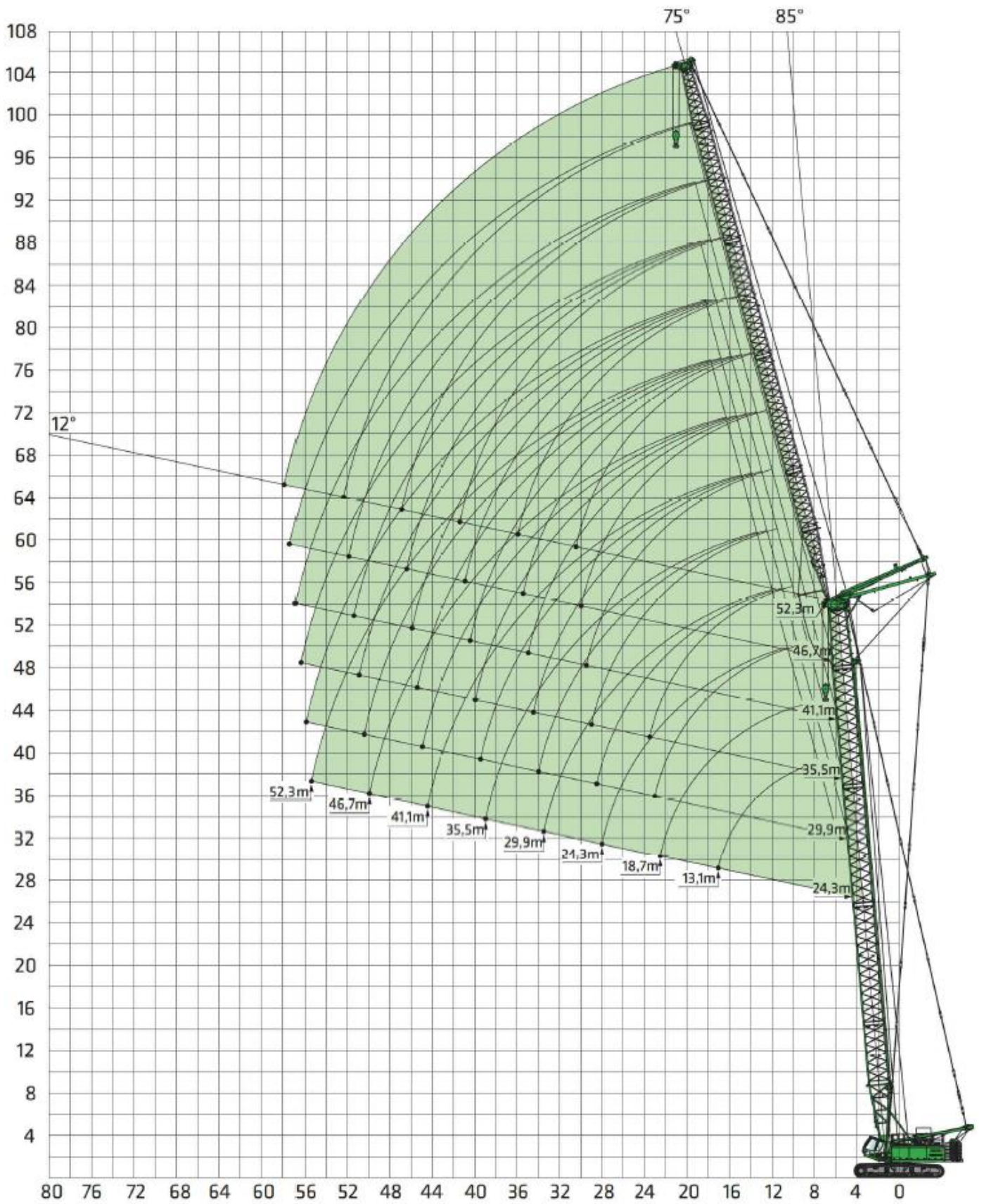
360°

DIN

75%

m	18.7	24.3	29.9	35.5	41.1	46.7	52.3	57.9	63.5	69.1	74.7	m
6	132.9	127.8	116.0	96.0								6
8	106.1	103.6	97.6	87.7	77.2	66.2	55.2					8
10	79.3	79.4	78.4	74.1	67.6	60.0	52.4	45.2	38.4	31.7		10
12	60.9	60.9	60.8	60.6	58.1	53.4	47.7	41.8	36.2	30.7	26.2	12
14	49.2	49.1	49.0	48.8	48.6	46.7	43.0	38.5	33.8	29.0	24.9	14
16	41.0	41.0	40.8	40.6	40.3	40.1	38.3	35.1	31.4	27.2	23.6	16
18	35.0	35.0	34.8	34.6	34.3	34.4	33.6	31.8	28.9	25.5	22.3	18
20		30.4	30.2	30.0	29.7	29.4	29.1	28.4	26.5	23.8	21.0	20
22		22.9	23.6	26.3	26.0	25.7	25.4	25.1	24.1	22.0	19.7	22
24			19.3	23.4	23.1	22.8	22.4	22.1	21.7	20.3	18.4	24
26				20.9	20.6	20.3	20.0	19.6	19.3	18.5	17.1	26
28				19.8	18.6	18.3	17.9	17.6	17.2	16.8	15.7	28
30				17.1	16.8	16.5	16.1	15.8	15.4	15.1	14.4	30
34				15.1	15.3	13.6	13.3	12.9	12.6	12.2	11.8	34
38					12.0	11.4	11.1	10.7	10.4	10.0	9.6	38
44						9.5	8.6	8.2	7.8	7.5	7.1	44
48							7.5	6.9	6.5	6.2	5.8	48
52								5.8	5.4	5.1	4.7	52
58									4.3	3.7	3.3	58
62										3.0	2.5	62
68											1.8	68

Dimensions in meters, weights and capacities in metric tonnes. For reference only.



Dimensions in meters, weights and capacities in metric tonnes. For reference only.



SH 24.3-29.9m
WS 85°



24.3-52.3m



60.0



6.8



360°



75%

m	24.3						29.9						m
	24.3	29.9	35.5	41.1	46.7	52.3	24.3	29.9	35.5	41.1	46.7	52.3	
11	48												11
12	46.7						42.3						12
13	44.8	38.2					40.8	34.5					13
14	42.8	37	30.6				39.3	33.8					14
15	40.9	35.7	30				37.8	32.8	28.1				15
16	38.9	34.4	29.2	24.8			36.2	31.7	27.4	23			16
17	36.9	33.1	28.3	24.2	20.3		34.7	30.7	26.7	22.6			17
18	35	31.8	27.5	23.7	20		33.2	29.7	26	22.1	18.9		18
19	33	30.6	26.7	23.1	19.5	16.9	31.7	28.7	25.3	21.6	18.5	16	19
20	31.1	29.3	25.8	22.5	19.1	16.6	30.2	27.7	24.5	21.1	18.1	15.7	20
22	27.4	26.7	24.2	21.3	18.3	15.9	27.2	25.6	23.1	20.1	17.4	15.2	22
24	24.4	24.2	22.5	20.2	17.5	15.3	24.3	23.6	21.7	19.1	16.7	14.6	24
26	21.9	21.7	20.9	19	16.7	14.7	21.8	21.5	20.2	18.1	15.9	14.0	26
28	19.8	19.6	19.2	17.9	15.9	14	19.7	19.5	18.8	17.1	15.2	13.4	28
30		17.8	17.6	16.7	15	13.4		17.8	17.4	16.1	14.4	12.8	30
32		16.3	16	15.5	14.2	12.8		16.2	16	15.1	13.7	12.3	32
34			14.7	14.4	13.4	12.1		14.9	14.6	14.1	13	11.7	34
36			13.5	13.2	12.6	11.5			13.5	13.1	12.2	11.1	36
38			12.5	12.2	11.7	10.9			12.4	12.1	11.5	10.5	38
40				11.3	10.9	10.2				11.2	10.8	10	40
44				9.6	9.4	9				9.6	9.3	8.8	44
48					8	7.7					8	7.7	48
52						6.6						6.6	52
56												5.6	56

Dimensions in meters, weights and capacities in metric tonnes. For reference only.

180 t**Sennebogen 5500****CraneNorway**
GROUP**SH 35.5-41.1m**
WS 85°**24.3-52.3m****60.0****6.8****360°****75%**

m	35.5						41.1						m
	24.3	29.9	35.5	41.1	46.7	52.3	24.3	29.9	35.5	41.1	46.7	52.3	
12													12
13	36.7						32.8						13
14	35.6	30.3					31.9	27.5					14
15	34.4	29.5	25.5				31.1	27					15
16	33.3	28.7	25				30.2	26.4	23.1				16
17	32.1	27.9	24.5	21.1			29.3	25.7	22.6	19.5			17
18	31	27.2	23.9	20.6	17.5		28.4	25.1	22.1	19.2			18
19	29.8	26.4	23.3	20.2	17.2		27.5	24.4	21.9	18.8	15.9		19
20	28.7	25.6	22.7	19.8	16.9	14.9	26.6	23.8	21.1	18.4	15.6	14	20
22	26.3	24	21.5	18.9	16.3	14.4	24.8	22.5	20.1	17.7	15.1	13.5	22
24	24	22.4	20.4	18	15.6	13.8	23	21.2	19.1	16.9	14.5	13.1	24
26	21.7	20.8	19.2	17.2	15	13.3	21.3	19.9	18.1	16.2	13.9	12.6	26
28	19.6	19.2	18	16.3	14.3	12.8	19.5	18.6	17.1	15.4	13.4	12.1	28
30		17.7	16.9	15.4	13.7	12.3		17.3	16.2	14.7	12.8	11.6	30
32		16.1	15.7	14.6	13	11.7		16	15.2	13.9	12.3	11.2	32
34		14.8	14.5	13.7	12.4	11.2		14.7	14.2	13.2	11.7	10.7	34
36			13.4	12.8	11.7	10.7			13.2	12.4	11.1	10.2	36
38			12.3	12	11.1	10.2			12.2	11.7	10.6	9.7	38
40			11.4	11.1	10.5	9.6			11.3	10.9	10	9.2	40
44				9.5	9.2	8.6				9.4	8.9	8.3	44
48					7.9	7.5					7.8	7.3	48
52						6.5						6.4	52
56						5.5						5.5	56
57												5.2	57

Dimensions in meters, weights and capacities in metric tonnes. For reference only.



SH 35.5-41.1m
WS 85°



24.3-52.3m



60.0



6.8



360°



75%

m	46.7						52.3						m
	24.3	29.9	35.5	41.1	46.7	52.3	24.3	29.9	35.5	41.1	46.7	52.3	
14	28.5						24.9						14
15	27.8	24.1					24.4	21.2					15
16	27.2	23.6	20.6				23.9	20.9					16
17	26.5	23.1	20.2				23.5	20.5	17.9				17
18	25.8	22.5	19.8	17.4			23	20.1	17.6	15.5			18
19	25.1	22	19.4	17.1	14.5		22.5	19.8	17.3	15.2			19
20	24.4	21.5	19	16.8	14.3		22	19.4	17	15	12.5		20
22	23.1	20.5	18.2	16.1	13.8	12.1	21.1	18.6	16.4	14.5	12.1	10.4	22
24	21.7	19.5	17.4	15.5	13.3	11.7	20.1	17.8	15.8	14	11.8	10	24
26	20.3	18.5	16.7	14.9	12.8	11.3	19.2	17.1	15.2	13.5	11.4	9.7	26
28	18.9	17.5	15.9	14.3	12.4	10.9	18.2	16.3	14.5	13	11	9.4	28
30	17.6	16.4	15.1	13.6	11.9	10.5	17.3	15.5	13.9	12.5	10.6	9.1	30
32		15.4	14.3	13	11.4	10.1		14.8	13.3	12	10.3	8.8	32
34		14.4	13.5	12.4	10.9	9.7		14	12.7	11.5	9.9	8.5	34
36			12.7	11.7	10.4	9.3		13.2	12.1	11	9.5	8.2	36
38			11.9	11.1	10	8.9			11.5	10.5	9.1	7.9	38
40			11.1	10.5	9.5	8.5			10.9	10	8.7	7.6	40
42				9.9	9.0	8.1				9.5	8.4	7.3	42
44				9.2	8.5	7.7				8.9	8	7	44
46				8.6	8.0	7.3				8.4	7.6	6.7	46
48					7.6	6.9					7.2	6.4	48
52					6.6	6.1					6.5	5.8	52
56						5.3						5.2	56
58												4.9	58

Dimensions in meters, weights and capacities in metric tonnes. For reference only.